

# HINGE-LOK™ Casing & Tubing Transportation Frame



**GLOBAL**  
**OFFSHORE™**



# Why use HINGE-LOK™

- A SAFE AND EFFICIENT SOLUTION FOR HANDLING & TRANSPORTATION OF ALL TYPES AND SIZES OF CASING & TUBING.
- ELIMINATES THE NEED FOR BUNDLING PIPE USING WIRE ROPE SLINGS
- THE **HINGE-LOK™** SYSTEM CAN ACCOMMODATE VARIOUS SIZES OF TUBULAR WITHIN THE SAME FRAME. MAKING THIS THE ONLY SYSTEM CURRENTLY AVAILABLE ON THE MARKET.
- THE **HINGE-LOK™** SYSTEM IS DNV 0378 & NORSOK R002 CERTIFIED.
- WITH ONLY THREE INDIVIDUAL SECTIONS AND SIX SPECIALLY DESIGNED SWIVEL-LOK SECURING NUTS MAKES THIS SYSTEM THE MOST EFFICIENT SYSTEM CURRENTLY AVAILABLE ON THE MARKET.
- FULL MATERIAL TRACEABILITY ON ALL PARTS.



## Cost Savings – HINGE-LOK vs Bundling

- LESS ONSHORE & OFFSHORE PERSONNEL REQUIRED vs BUNDLING.
- CENTRALIZER INSTALLATION , DRIFTING & PIPE TALLY PERFORMED ONSHORE, SAVING VALUABLE RIG TIME.
- PIPE IS READY TO RUN UPON ARRIVAL AT THE RIG SITE. ELIMINATING THE NEED TO LAY OUT PIPE UPON ARRIVAL. SAVING VALUABLE RIG TIME.
- ELIMINATE THE USE OF “ONE TIME” WIRE ROPE SLINGS AND CLAMPS.
- REDUCED CRANE AND FORKLIFT HANDLING.
- MULTIPLE PIPE SIZES CAN BE USED WITHIN THE SAME FRAME. ELIMINATING THE NEED FOR SEPARATE LIFTS.
- ITEMS PACKED IN THE HINGE-LOK SYSTEM ARE CLEARLY VISIBLE. ELIMINATING THE NEED TO GAIN ACCESS INSIDE CARGO BASKETS TO CHECK EQUIPMENT.







# TECHNICAL SPECIFICATION

- MATERIAL SPECIFICATION
  - Fully extruded Aluminium cross beams and lifting uprights AW6082. All profiles are produced according to ISO 14046 & Greenhouse Gas Protocol WBCSD/WRI
- APPROVAL
  - Approved to DNV GL-ST-0378
  - NORSOK R002
- STANDARDS USED FOR MANUFACTURING & DESIGN
  - DNV 2.7-1 – Offshore containers – June 2013
  - NORSOK R002 – Lifting Equipment
  - DNVGL – ST-0378 – Standard for offshore & platform lifting – May 2016
  - DNVGL – ST – N001 – Marine operations – June 2016
- DESIGN TEMPERATURE
  - -20 Degrees Celsius
- SAFE WORKING LOAD
  - 7000kg
- TEST LOAD
  - 2 x SWL – according to DNVGL-ST-0378 table 14-2
- HINGE-LOK™ DESIGN
  - The system can be manufactured to our clients specific requirements. To operate safely with rig specific pipe handling systems, or client specific pipe handling procedures.



# HINGE-LOK™ PRODUCTLINE

- **HINGE-LOK™** - Standard casing, tubing & drill pipe
- **HINGE-LOK™ SP** – Screen & expandable liners
- **HINGE-LOK™ C** – Conductors & risers
- **HINGE-LOK™ PLUS** – DNV 2.7-1 system

**A SAFE AND EFFICIENT SOLUTION FOR HANDLING &  
TRANSPORTATION OF ALL CASING & TUBING**

# HINGE-LOK™ CROSS BEAMS

- ALL CROSS BEAMS & UPRIGHTS ARE MANUFACTURED AS A ONE PIECE FULLY FULLY EXTRUDED AW6063 ALUMINIUM PROFILE.
- THE NEW “V” PROFILE ALLOWS THE SAME CROSS BEAM TO BE USED FOR VARIOUS PIPE SIZES.
- EACH CROSS BEAM CAN BE MACHINED TO CLIENTS DESIRED SPECIFICATION
- THE WEIGHT OF EACH CROSSBEAM IS LESS THAN 13KGS



# Key features

- CAN BE USED WITH BOTH CONVENTIONAL AND MECHANIZED PIPE HANDLING SYSTEMS.
- WITH ONLY SIX SWIVEL LOCK NUTS TORQUED TO 100NM, IT MAKES THIS SYSTEM A SAFE, SIMPLE SYSTEM TO ASSEMBLE.
- CENTRALIZERS CAN BE PRE-INSTALLED ON THE CASING & TUBING ONSHORE.
- NO ADDITIONAL PERSONNEL REQUIRED AT THE RIGSITE TO UNLOAD TUBULARS FROM THE CRADLE.
- CAN BE EASILY ASSEMBLED BOTH ONSHORE & OFFSHORE.
- THE HINGE-LOK™ SYSTEM CAN BE DESIGNED TO MEET RIG SPECIFIC HANDLING.





A DNV 2.7-1 SOLUTION FOR SAFE AND EFFICIENT HANDLING OF  
TUBULARS THAT REQUIRE ULTIMATE PROTECTION DURING  
TRANSPORTATION

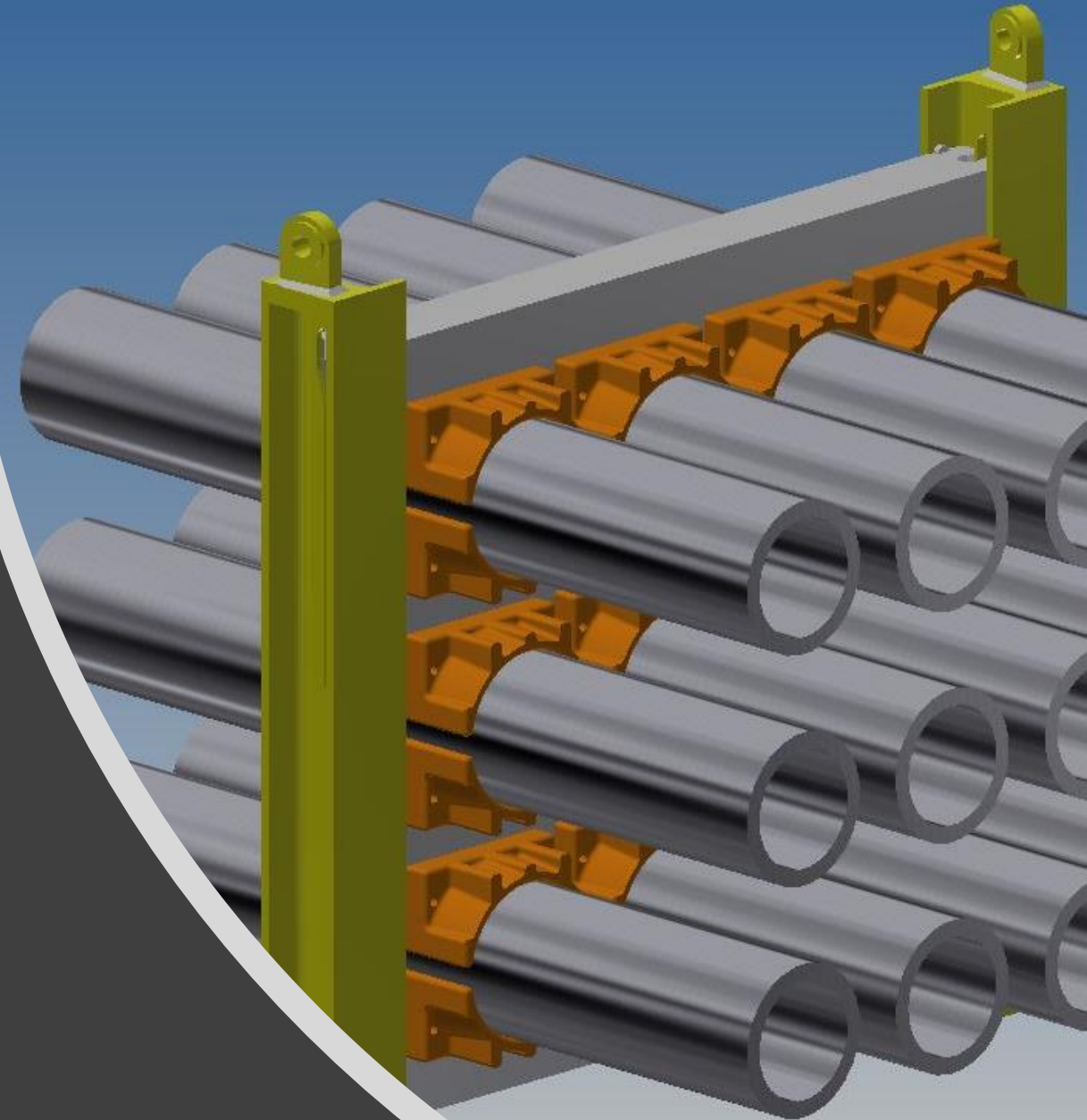
# HINGE-LOK™ PLUS

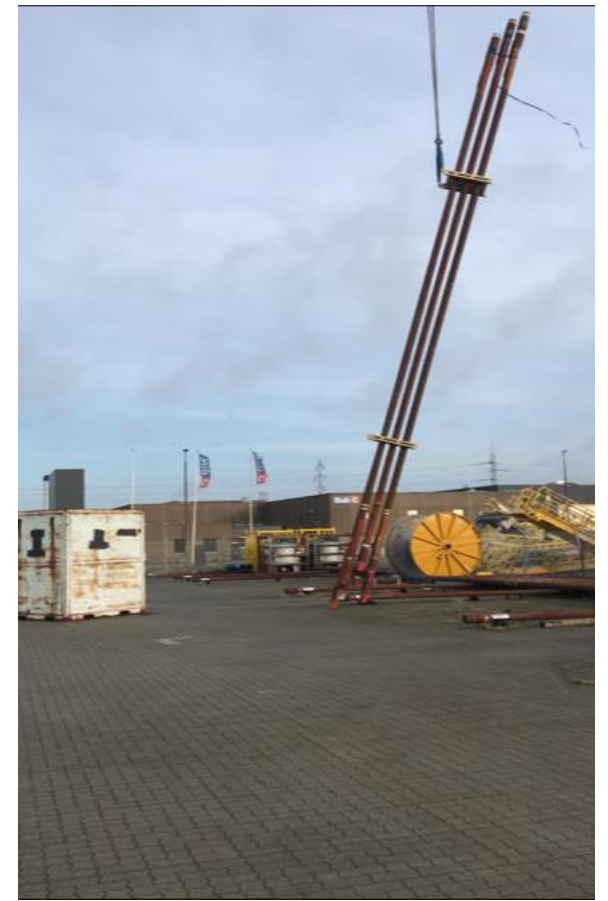
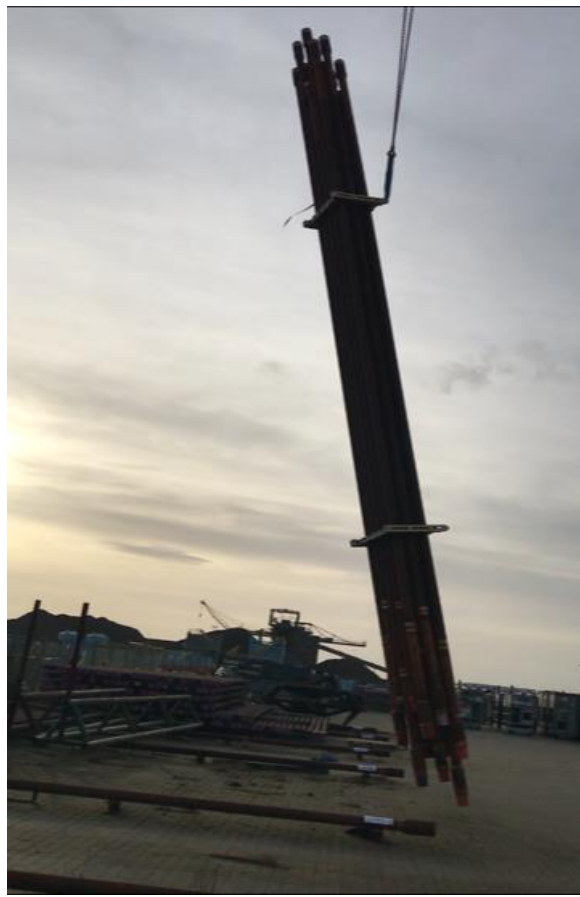




# HINGE-LOK™ SP

- DESIGNED TO PROTECT SCREEN LINERS, EXPANDABLE LINERS & HIGH CHROME CONTENT TUBULARS. THE SPECIALLY DESIGNED INSERTS CAN BE MANUFACTURED TO ACCOMMODATE ANY SIZE OR LENGTH OF SCREEN LINER
- EACH INSERT IS MANUFACTURED FROM POLYURETHANE RUBBER WITH A HARDNESS OF BETWEEN 60 AND 90 SHORE, DEPENDING ON CLIENTS REQUIREMENTS.

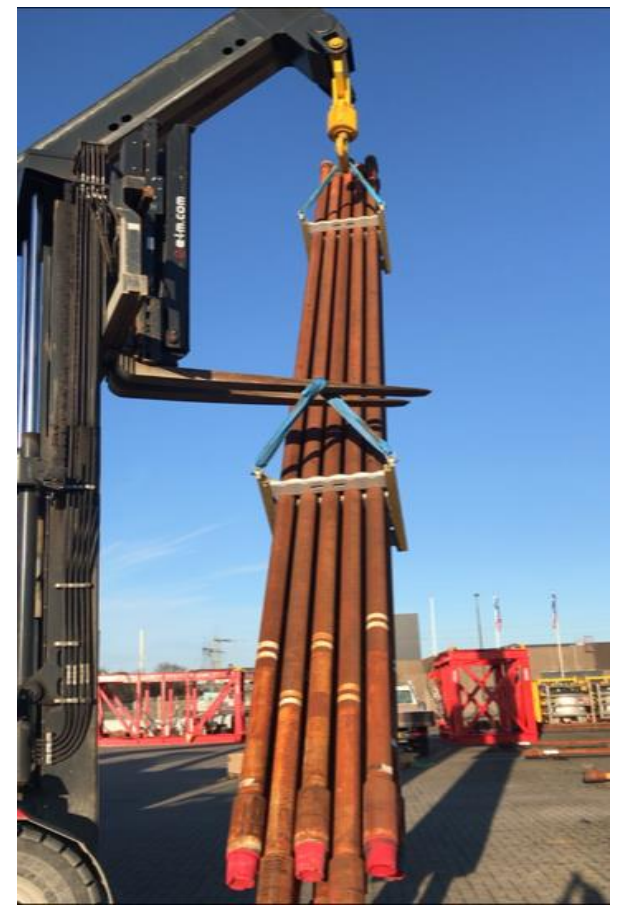
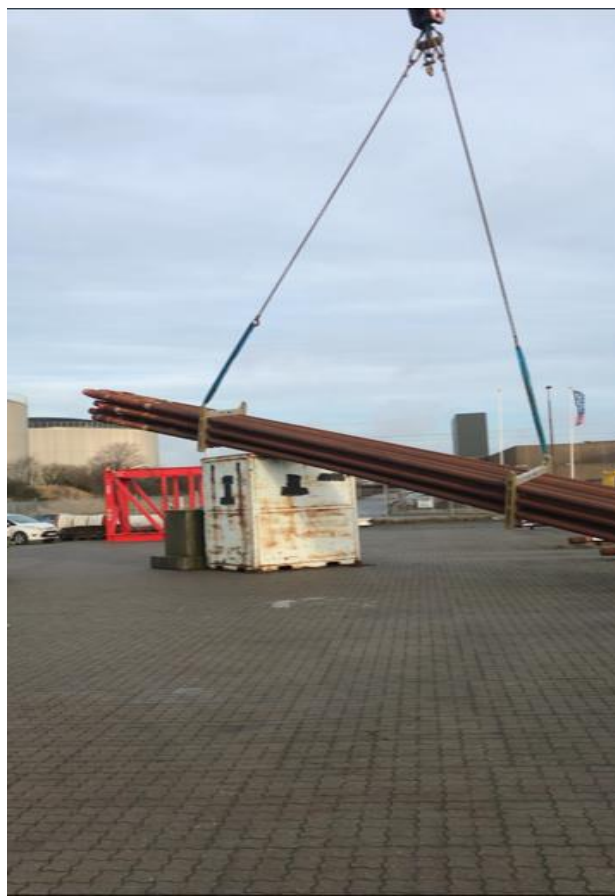




# Testing

---

Testing of the prototype exceeds DNV 0378 Criteria



# Testing

---

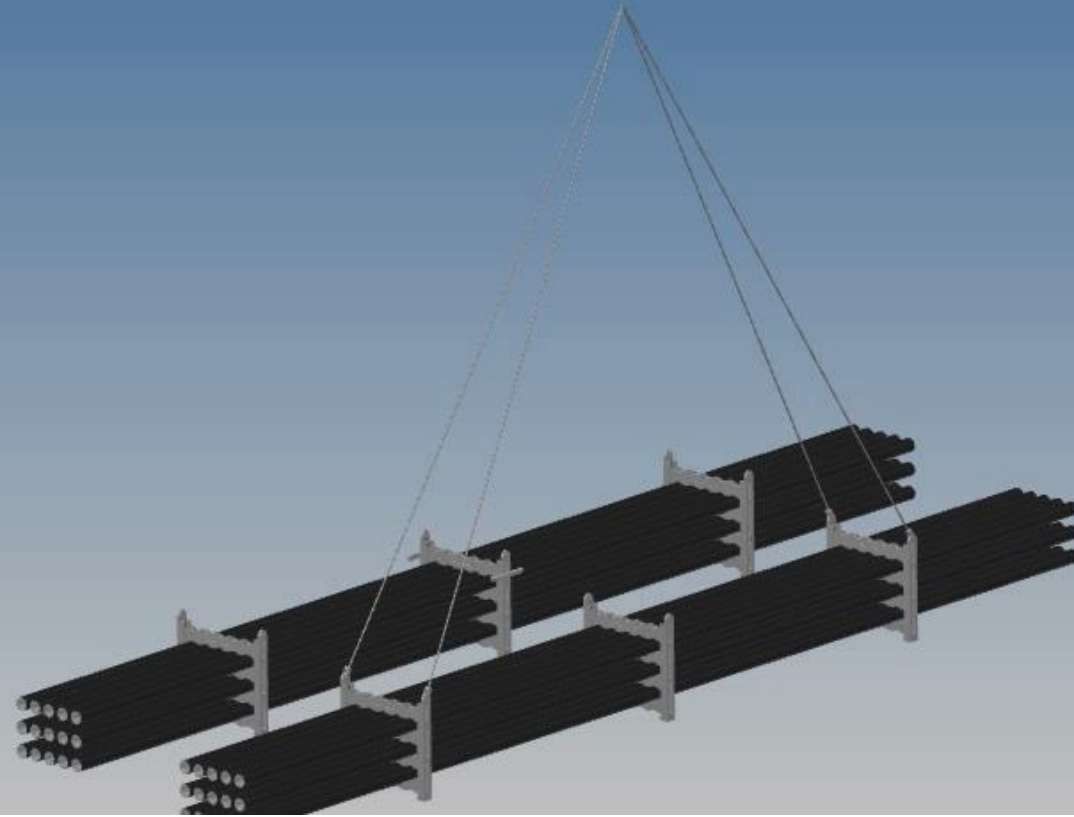
Testing of the prototype exceeds DNV 0378 Criteria



# Technical Information

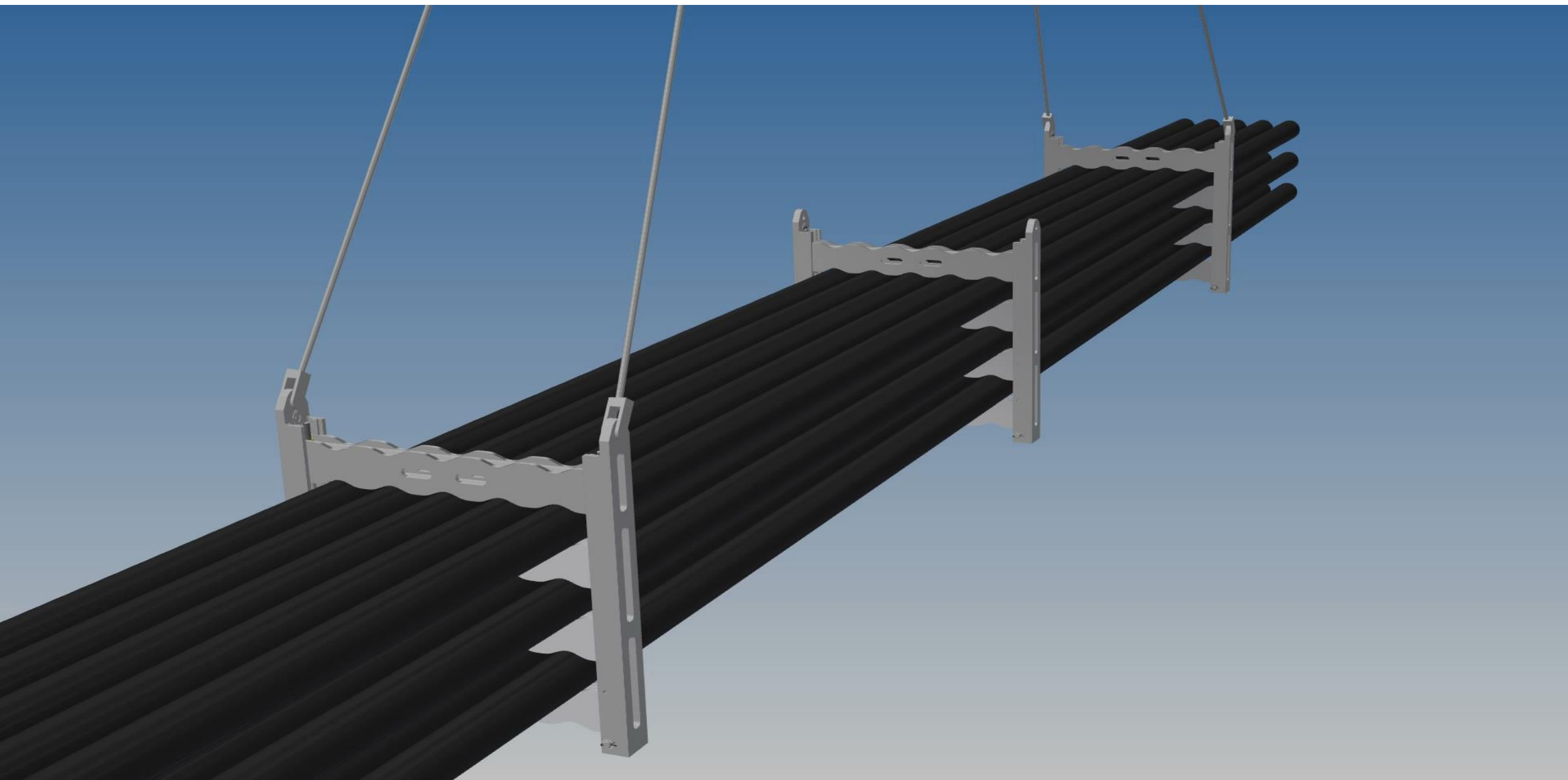
TUBULAR SIZE	QUANTITY WIDTH X HEIGHT	Total Quantity
2 7/8"	7 X 6	42
3 1/2"	7 X 4	28
4"	5 X 5	25
4 1/2"	6 X 4	24
5"	5 X 4	20
5 1/2"	5 X 3	15
7"	4 X 3	12
7 5/8"	3 X 3	9
8 5/8"	3 X 2	6
9 5/8"	3 X 2	6
10 3/4"	3 X 2	6
13 3/8"	2 X 2	4





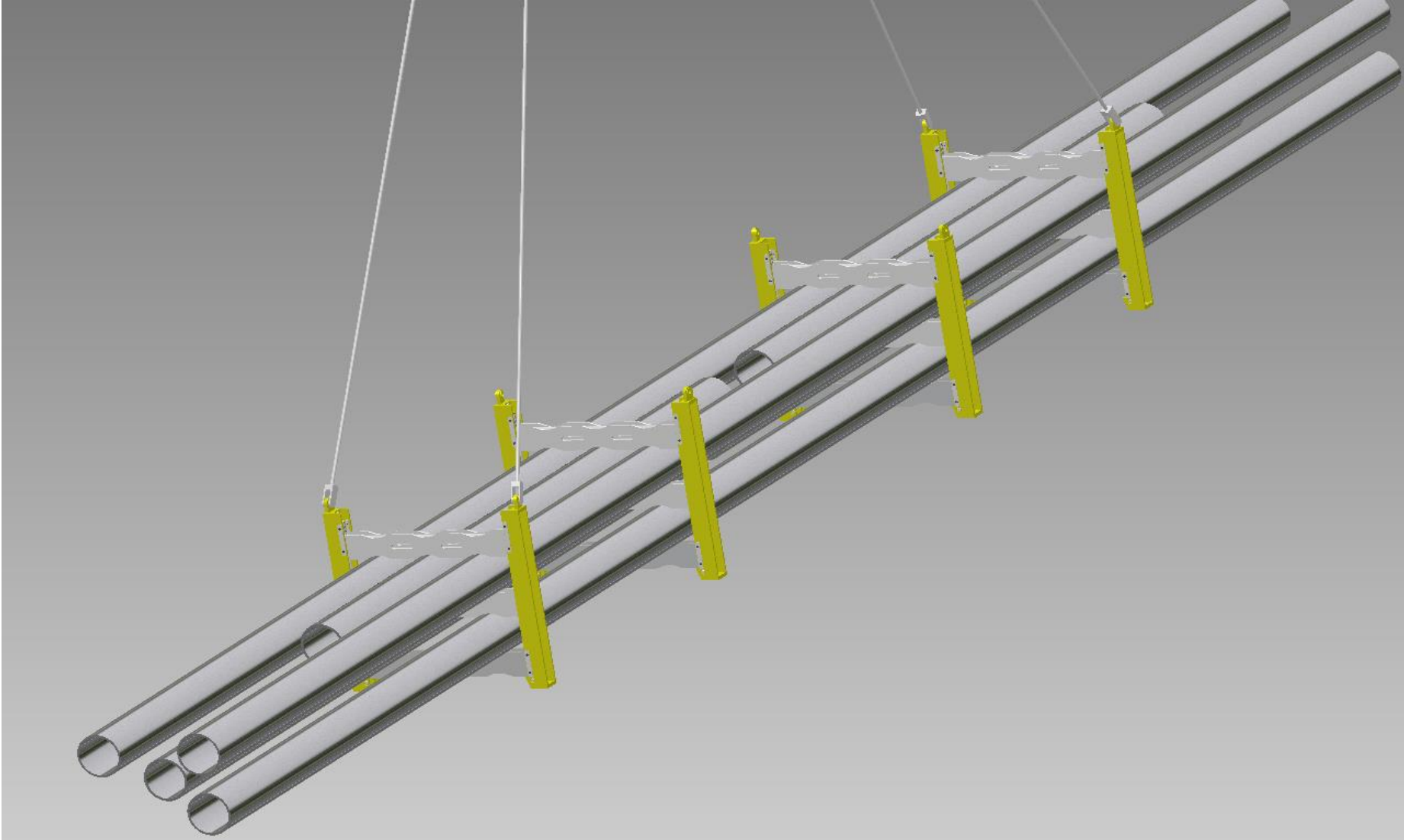
# All Aluminum version

With locating and tie down device



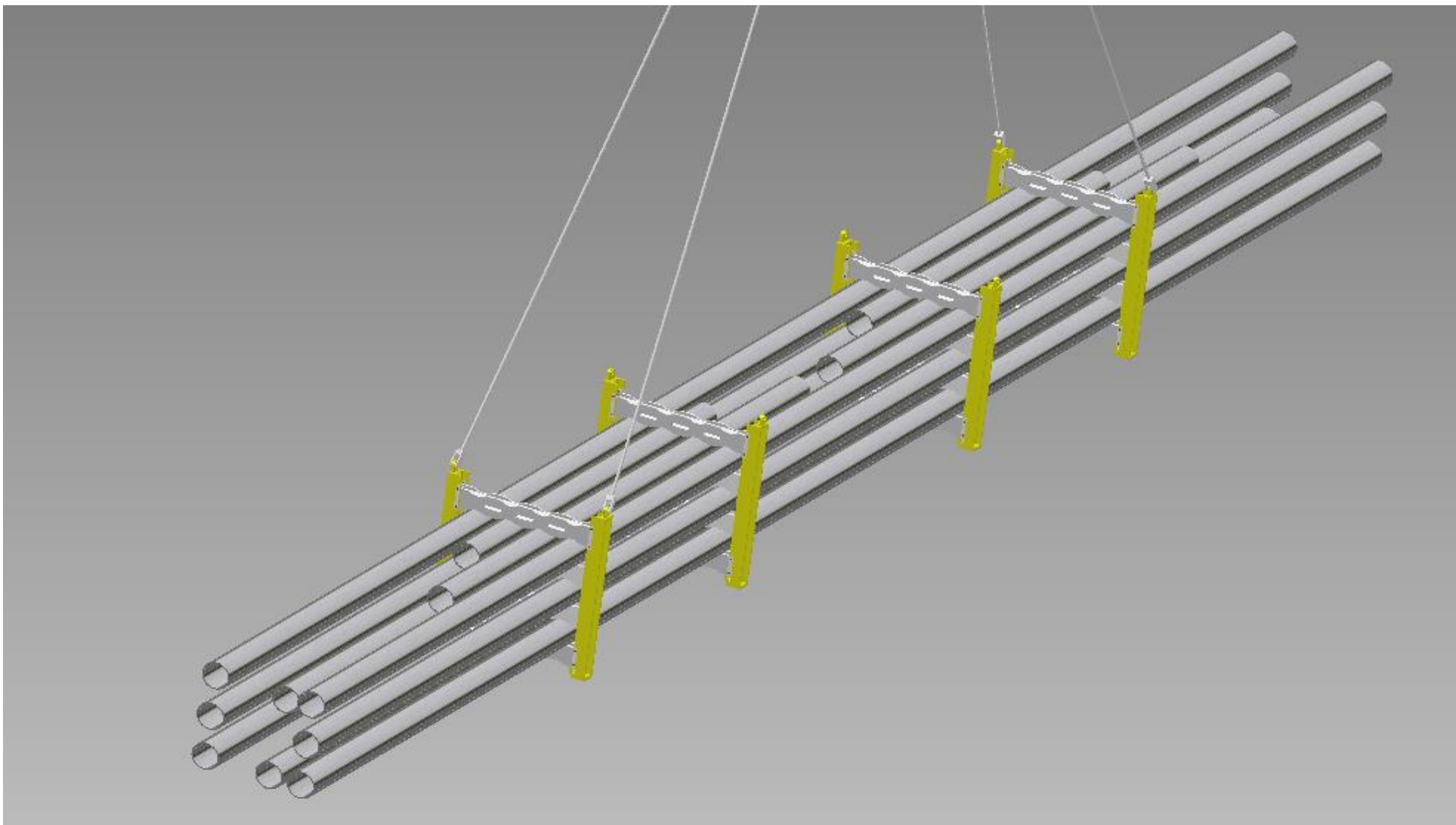
Storage set up





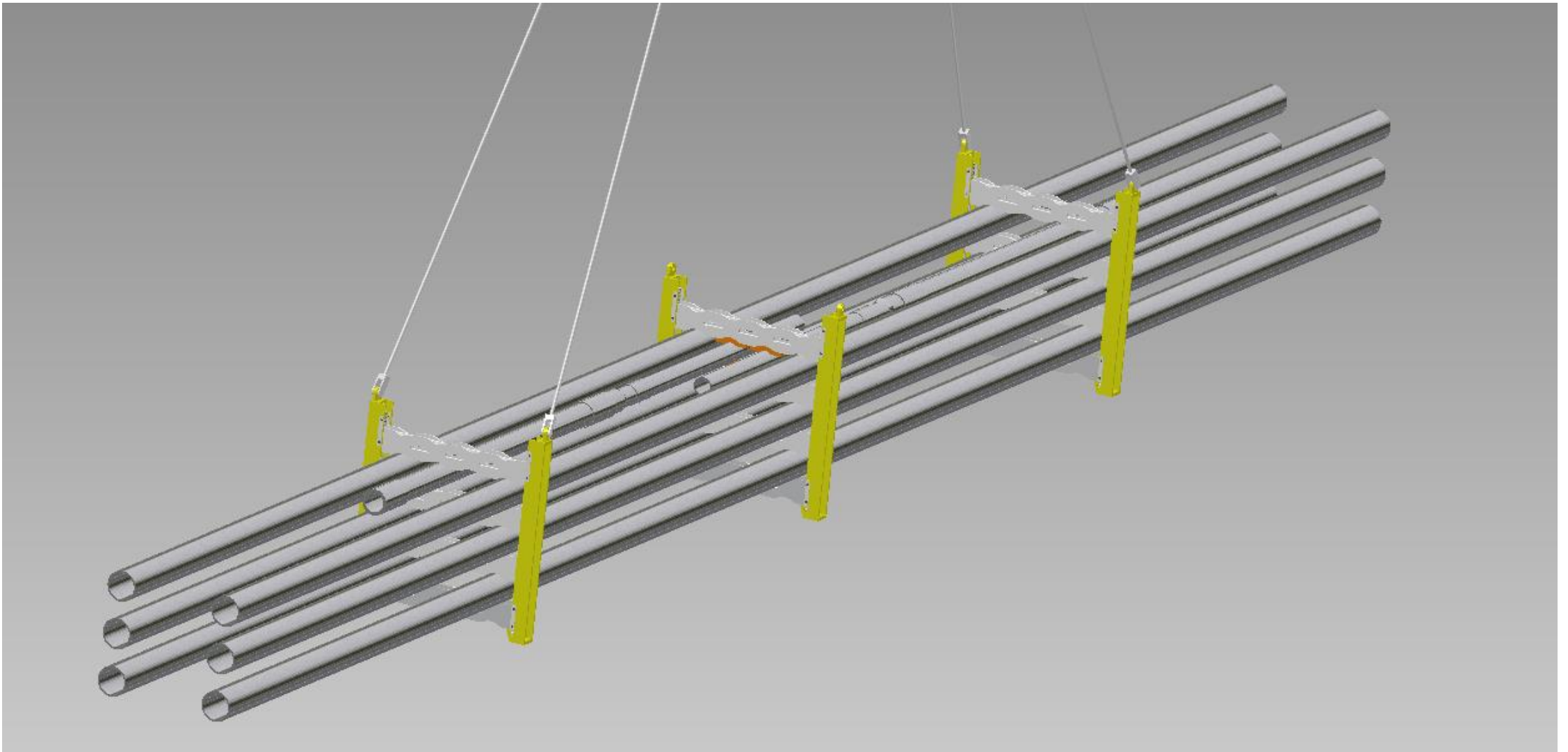
# Client specific

Lifting assembly to accommodate 3 x 9 5/8" full joints + 4 x 9 5/8" pup joints



# Client specific

Lifting assembly to accommodate 7 x 7 5/8" full joints + 6 x 7 5/8" pup joints



# Client specific

Lifting assembly to accommodate 6 x 7" full joints + 2 x 5 1/2" x 4 1/2" cross over joints



The list below will highlight the reasons for NOT using HINGE-LOK™

1. ....
2. ....
3. ....
4. ....
5. ....

There are no reasons....

