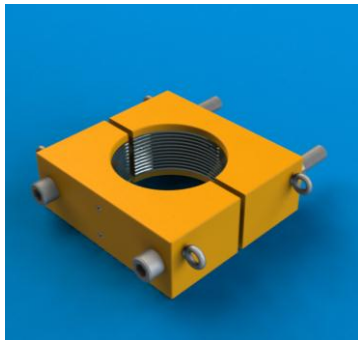


## TENSA GRIPPER TYPE CONDUCTOR CLAMPS

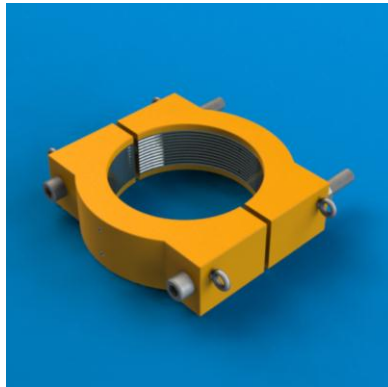
The TENSA Gripper type conductor clamps are the perfect solution for supporting the jackup rig drilling conductor on the TENSA conductor tensioning system.

The clamps are made in all sizes from 9 5/8" to 36". Standard sizes of 13 3/8", 20" and 30" can be delivered at short notice.

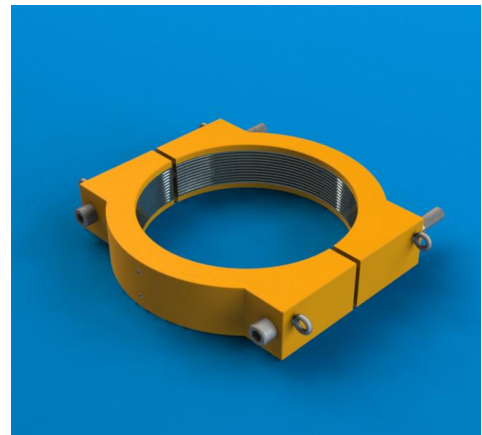
The clamps grip due to the tension applied by the clamp bolt. The bolt is accurately tensioned using an hydraulic bolt tensioner included in the kit. The clamps are based on a proven design and have been rigorously designed and analysed to ensure that they do not compromise the strength of the conductor whilst offering a significant factor of safety against slippage.



GC 1338



GC 20



GC30

### KEY FEATURES:

- Single clamp bolt ensures tension can be accurately set.
- Long bolt ensures tension is maintained as clamp teeth grip conductor
- Extremely robust
- Minimal maintenance required
- Compatible with the complete range of TENSA conductor tensioners
- Dual hand pump bolt tensioners are supplied to allow extremely quick installation.

### SPECIFICATIONS:

#### Load capacity

CLAMP	SIZE inches	Capacity (te)
GC 1338	13 3/8"	150
GC 20	20"	230
GC 30	30"	250
GC 36	36"	250

#### Overall dimensions

CLAMP	SIZE mm	WEIGHT kg
GC 1338	585x550x200	365 kg
GC 20	755x730x200	425 kg
GC 30	1010x980x200	575 kg
GC 36	1160x1130x200	700 kg

CC Rev7