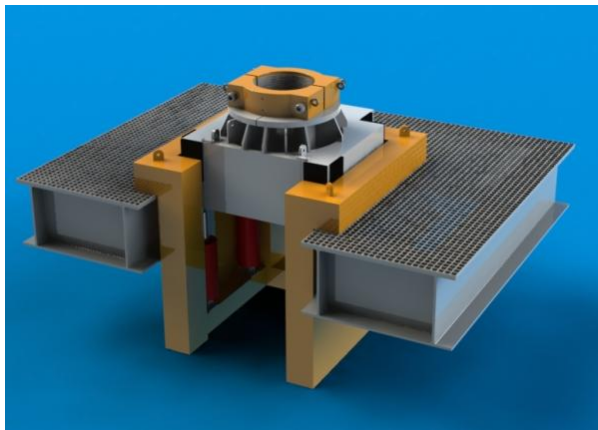


TENSA PUSH TYPE CONDUCTOR TENSIONER RO-RECESSED OPEN TYPE

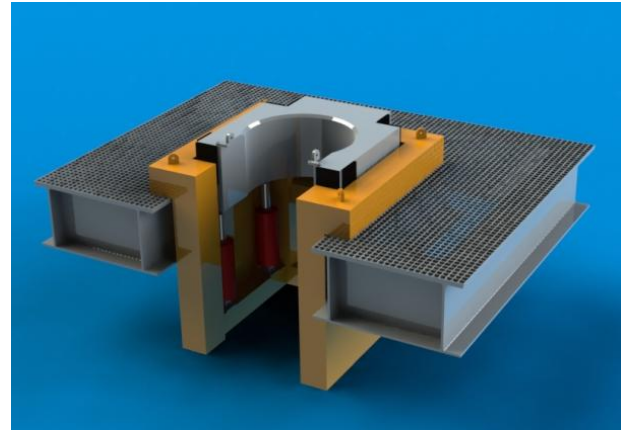
The TENSA open type conductor tensioner is designed for subsea well construction from jackup drilling rigs. Load capacities from 200 tonnes (RO 200) to 250 tonnes (RO 250) are available.

This conductor tensioner has a removable gate which allows guide bases, subsea trees etc to be lowered astern of the tensioner then brought into the tensioner by skidding the cantilever forward. The gate of the tensioner is then reinstalled.

TENSA also offers a matching conductor deck with multiple slot locations.



Tensioner with clamp and support bushes



Tensioner with support bushes & gate removed

KEY FEATURES:

Support surface for conductor clamp is only 300mm above the conductor deck providing easy access to wellhead and BOP

Lateral loading is taken on large sliding pads at deck level. The tensioner has larger lateral capacity than competitors.

Extremely robust construction requiring minimal service or maintenance

Compatible with the complete range of TENSA conductor clamps

Designed for very quick installation – place tensioner in slot, plug in hoses and operate

Excellent corrosion resistance from material selection and coatings

Standard control unit is air powered using rig air

Operates on glycol-water based fluid or mineral oil

Optional pressure interface with rigs control systems

SPECIFICATIONS:

Maximum vertical load: 200, 250 tonnes

Maximum horizontal load: 25 tonnes

Maximum opening: 952mm (37½")

Conductor size range: 245mm (9 5/8") to 915mm (36")

Maximum Operating Stroke: 300mm (12") (350mm optional)

Tension Variation vs Stroke less than 25% over 150mm stroke

Hydraulic Cylinders: 4 off with 316SS rods

Hydraulic Fluid: Glycol/water based - offshore riser tensioner fluid

Overall Dimensions: 1900w x 1900w x 1300h

Recess Size: 1500mm wide slot required

Tensioner Unit Weight (with insert bushes): approx 5500 kg (depending on model and bushes)

Surface Treatment: Abrasive blast to class 2 ½

1- inorganic zinc silicate 75 - 90 micron

2 - high build epoxy 150 - 200 micron

3 - recoatable acrylic 50 - 60 micron,

Operating Temperature: 0° C to +50° C ambient (-10 deg C option available)

RO rev3

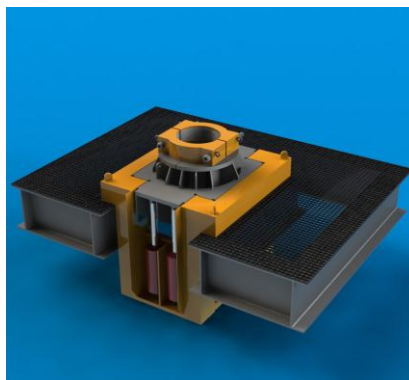
TENSA PUSH TYPE CONDUCTOR TENSIONER RS - RECESSED SOLID TYPE

The TENSA push type conductor tensioner is designed to be compatible with most existing conductor decks designed with a 1200mm opening for recessed tensioners. The current standard model range is:

MODEL	LOAD CAPACITY (te)	STROKE (mm)
RS200	200	300
RS230	230	300
RS300	300	300
RS300-35	300	350
RS300-60	300	600
RS400	400	300

Tensioners can be made with customer specific load capacity or stroke if required.

Lateral support to the conductor is provided by using a simple guide system that combines with close fitting insert bushes. The cylinders are protected from damage and debris by the top table providing a robust product that will survive in the extreme drilling environment.



KEY FEATURES:

- Support surface for conductor clamp is only 300mm above the conductor deck providing easy access to wellhead and BOP
- Lateral loading is taken on large sliding pads at deck level. The tensioner has larger lateral capacity than competitors.
- Extremely robust construction requiring minimal maintenance
- Compatible with the complete range of TENSA conductor clamps
- Designed for very quick installation – place tensioner in slot, plug in hoses and operate
- Standard control unit is air powered using rig air
- Operates on glycol-water based fluid or mineral oil
- Optional pressure interface with rigs control systems

SPECIFICATIONS:

- Maximum vertical load:** 200-400 tonnes
- Maximum horizontal load:** 25 tonnes
- Maximum opening:** 952mm (37½")
- Conductor size range:** 245mm (9 5/8") to 915mm (36")
- Maximum Operating Stroke:** 300-600mm (12"-24")
- Tension Variation vs Stroke** less than 25% over 150mm stroke
- Hydraulic Cylinders:** 4 off with 316SS rods
- Hydraulic Fluid:** Glycol/water based
- Overall Dimensions:** 1850 l x 1200 w x 1300 h
- Tensioner Unit Weight (with insert bushes):** approx 5300 kg (depending on model and bushes)
- Surface Treatment:** Abrasive blast to class 2 ½ + inorganic zinc silicate 75 - 90 micron+ high build epoxy 150 - 200 micron + recoatable acrylic 50 - 60 micron,
- Operating Temperature:** 0° C to +50° C ambient (-10 deg C option available)

rs ver05