

ROBORIGGER ARM1500 ROTATING MODULE

The TENSA ROBORIGGER products (patent pending) are designed to allow the orienting and landing lifted loads to be undertaken without the need for people to be in the vicinity of the load. This reduces the risk to personnel and will save lives. Roborigger also eliminates the need for tag lines on loads.

Not only is it safer, but it eliminates the need for an extra person to orient position and release the load. Lifting operations are faster as no tag lines need to be attached or removed and because loads are oriented in the air during the lift and can be lowered immediately once the position has been reached. Roborigger also allows tasks that are challenging because of poor or unsafe access to be performed easily and safely. Loads with large windage such as panels can be lifted in stronger winds giving significantly increased crane utilization. These are significant cost savings that will pay back in under 1 year.

The ROBORIGGER ARM modularised system separates the rotating and orientation system from the lifting system. The ARM1500 module is designed to have sufficient capacity to rotate and hold a 40ft container in position in winds of 15kn (27km/hr) gusting to 20kn (36 km/hr). The lifting frame can be designed for any lifting capacity. We currently have 10t, 15t and 20t capacity systems available. It is controlled wirelessly using a handheld remote. Roborigger can maintain the heading of the load continuously regardless of wind.

The ROBORIGGER Wireless Release system allows the operator to release the load remotely by wireless. The system has inbuilt safeguards to prevent release under load and has a dual command system requiring 2 buttons to initiate a release. Roborigger includes a video camera and load cell and is fully internet connected by wifi or 3g/4g so that all lifts are recorded on the internet database complete with date, time, location, weight and a high resolution image. Load ID can also be recorded.



Roborigger modular rotator with lifting frame



Roborigger ARM modules on lift frame

KEY FEATURES:

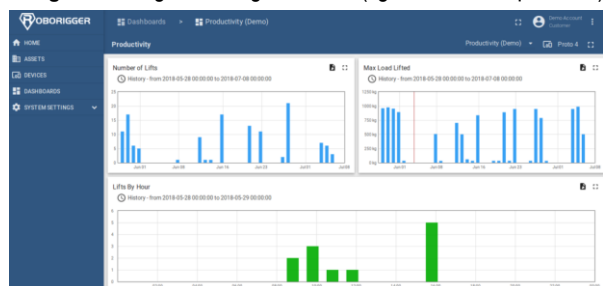
- Integrated load cell
- Integrated IP camera capable of providing video feed and still pictures of load
- 4g modem to provide internet connectivity
- Wifi for transmission of video
- Wireless remote using off the shelf 2.4 GHz crane controller
- 12 hour battery pack
- onboard battery charger: input AC240V 15A single phase.
- Remote monitoring using TENSA IOT website via 4g data connection
- 3m long x torsion support system

SPECIFICATIONS:

WLL: 15,000kg

Size: 1550mm (L) x 2100 mm (W) x 1200mm(H) excl. frame

Weight: 1050kg excluding lift frame. (lighter versions possible)



Online monitoring of all lifts and Roborigger performance and productivity.

ROBO_arm1500 v1